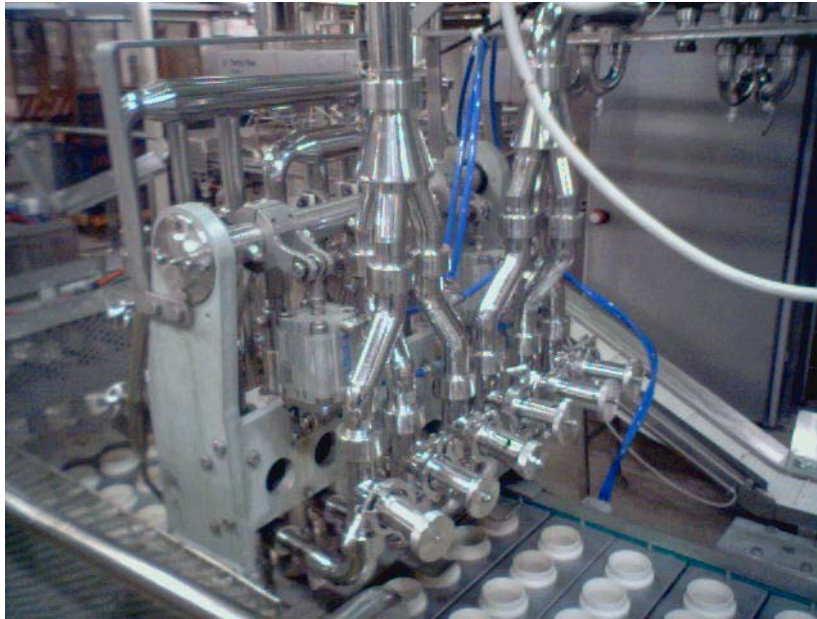


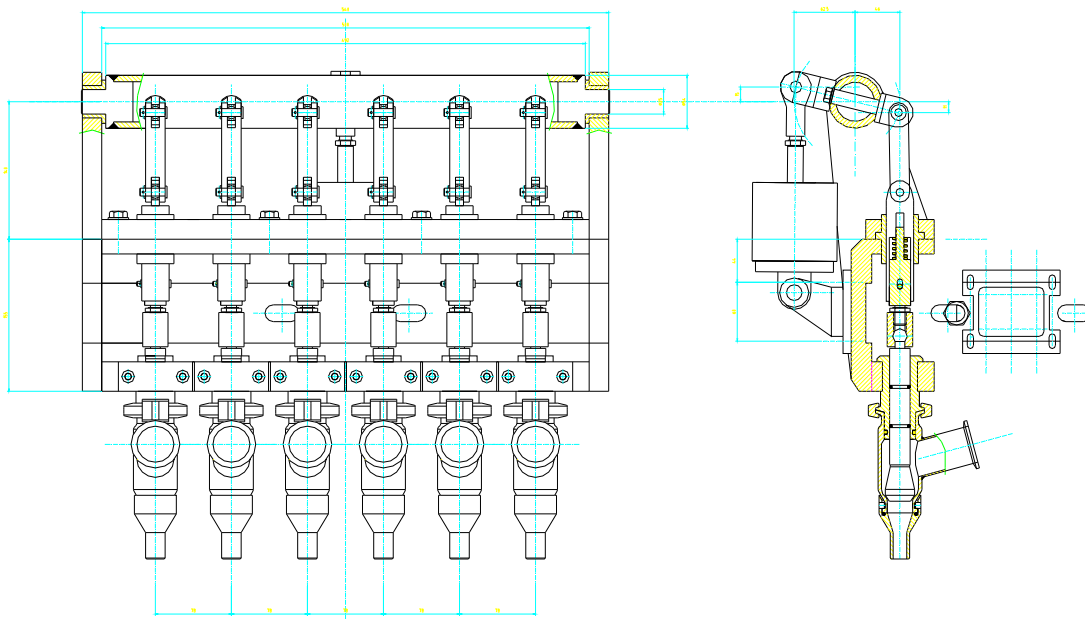
## 1. FILLING SYSTEMS

- DOSING GROUP WITH VALVES 1.2
- DOSING GROUP WITH VALVES 1.3
- VOLUMETRIC DOSING GROUP WITH VALVES 1.4
- DOSING GROUP WITH EXTRUDERS 1.5
- TOP SPRAY GROUP WITH VALVES VOLUM. 1.6
- DOSING GROUP WITH VALVES AND WAVES  
TERMINAL 1.7
- FILLING GROUP WITH VALVES 1.8
- VOLUMETRIC DOSING GROUP WITH  
PNEUMATIC VALVES 1.9
- MOTION SYSTEM FOR DOSING GROUPS WITH  
CONTROLLED AXES  
1.10
- TWO-TASTE VALVE AT DOUBLE STEM  
AND BRUSHLESS MOTOR 1.11
- DOSING GROUP WITH JOHNSON PUMPS 1.12
- ONE-TWO-THREE TASTE VALVES AND TERMINALS  
1.13
- OTHERS DOSING GROUPS 1.15

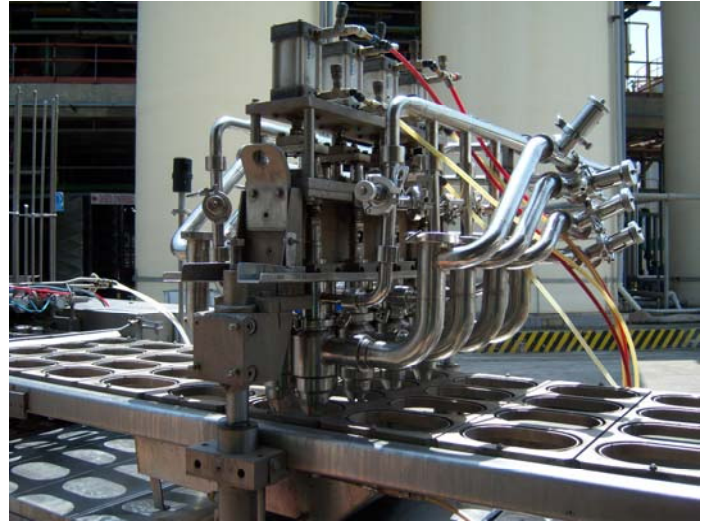
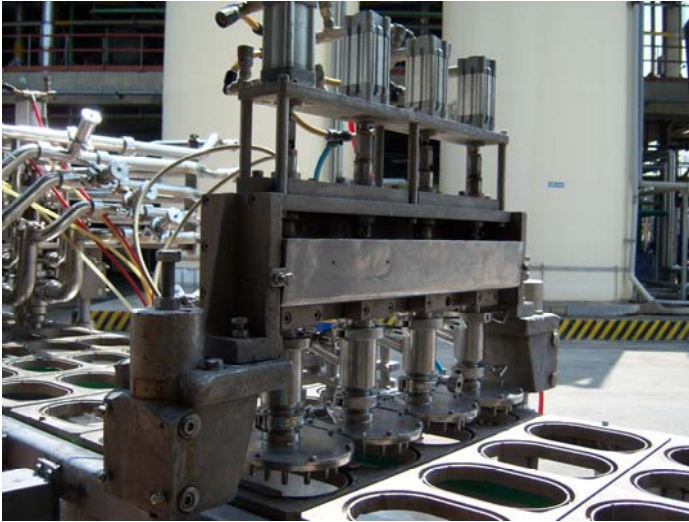
## DOSING GROUP WITH VALVES



This equipment is fit to the dosing of liquid and creamy products, with valves to single and double entry, opening and closing of the valve commanded by pneumatic pistons, completely adjustable in its position adapts him with any anchorage to all the machine. It has a speed of tested production of 60 shots/1s'

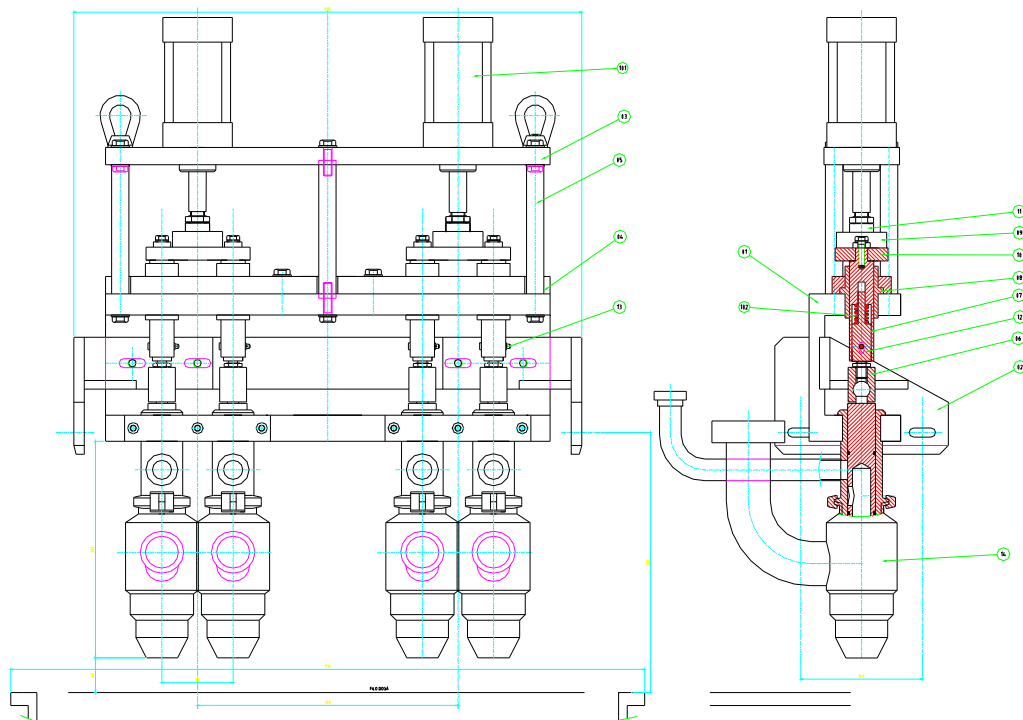


## DOSING GROUP WITH VALVES

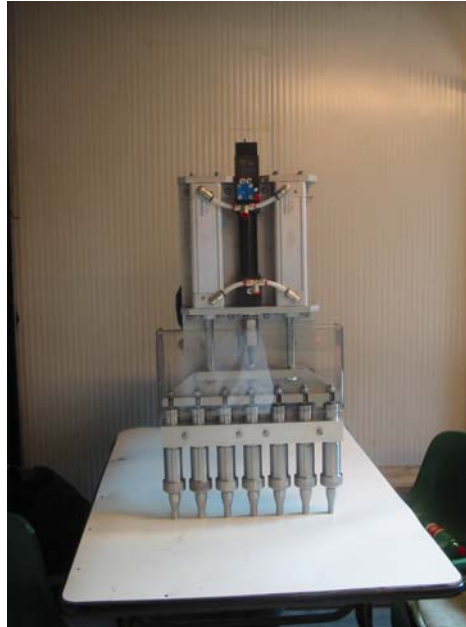


This equipment is fit to the dosing 2 taste or 1 taste\o or decoration of liquid products or half liquid, with valves to single and double entry, opening and closing of the valve commanded by pneumatic pistons, completely adjustable in its position adapts him with any anchorage to all the machine.

It has a speed of tested production of 60 shots/1s'

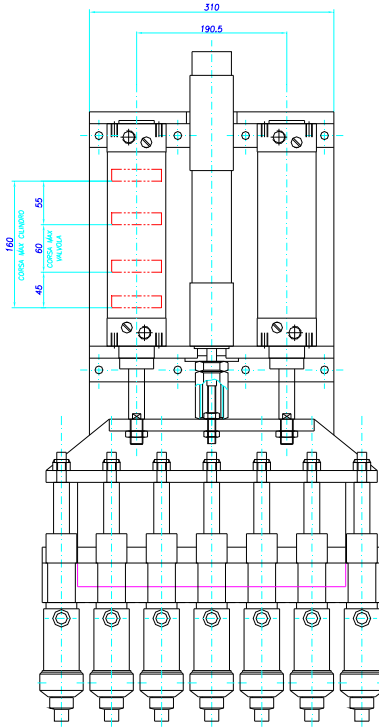


## VOLUMETRIC DOSING GROUP WITH VALVE

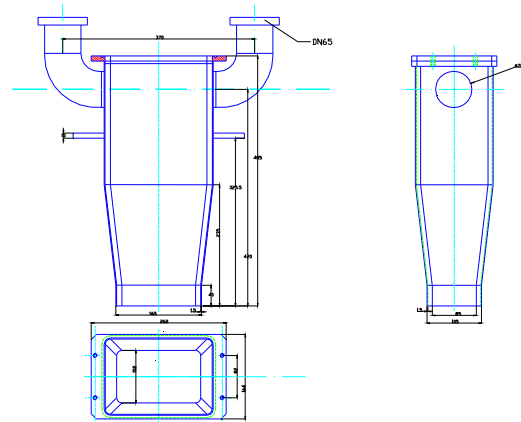


This equipment is fit to the volumetrical dosing monotaste or decoration of liquid products or half liquid, with valves to single entry, opening and closing of the valve commanded by pneumatic pistons, completely registrabile in its position adapts him with any anchorage to all the machine.

It has a speed of tested production of 60 shots/1s'

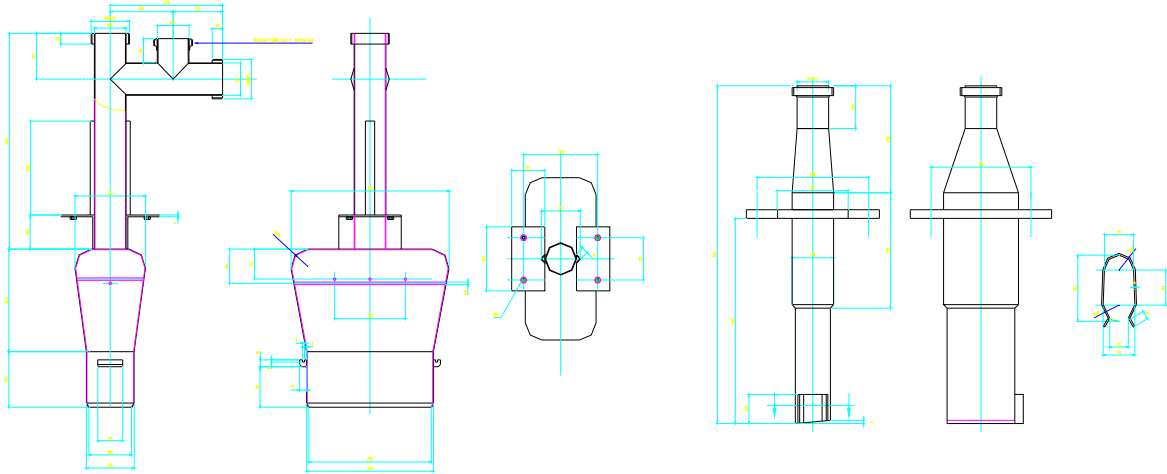


**DOSING GROUP WITH EXTRUDERS**



This equipment is fit to the dosing with extruders of creamy products, to double entry, to continuous throw and a group of underlying cut it creates the slice that will be deposited in a tub, completely adjustable in its position adapts him with any anchorage to

all the machine.

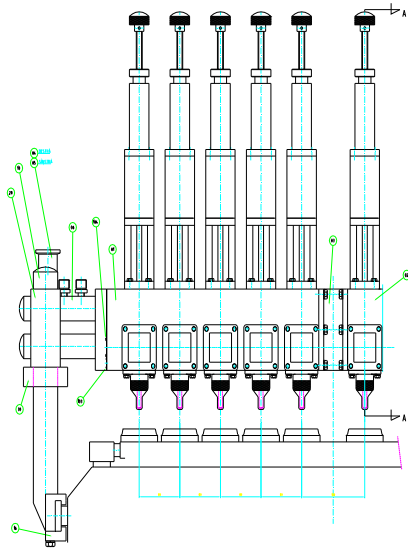


## TOP SPRAY GROUP WITH VOLUMETRIC VALVES



This equipment is fit to the dosing 2 taste or of half liquid products, with valves to double entry, opening and closing of the valve commanded by pneumatic pistons, with flute terminals for a wave dosing.

Entirely registrabile in its position adapts him with any anchorage to all the machine. It has a speed of tested production of 20 shots/1s'

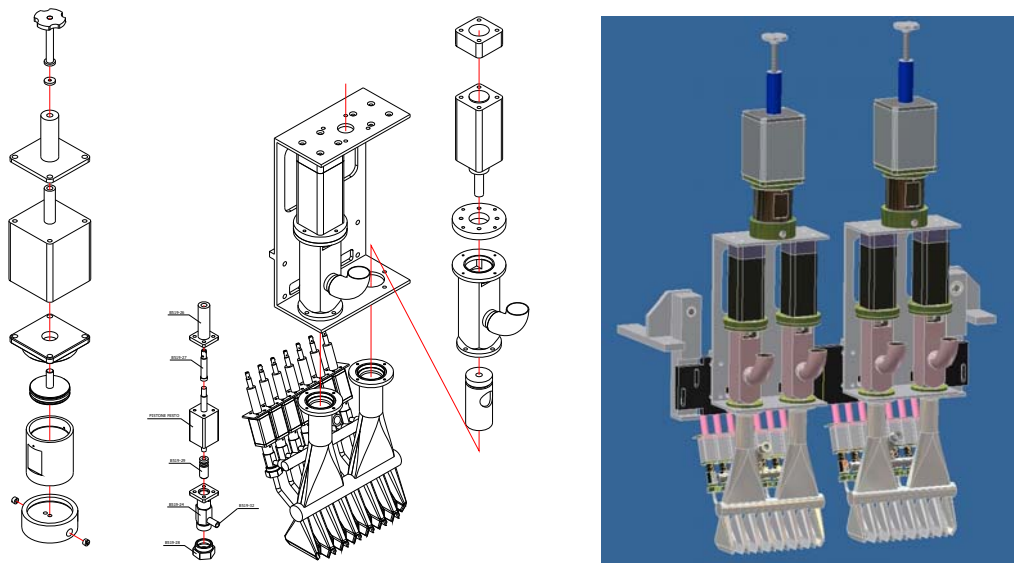


## **DOSING GROUP WITH VALVES AND TERMINALS "WAVE DOSING"**

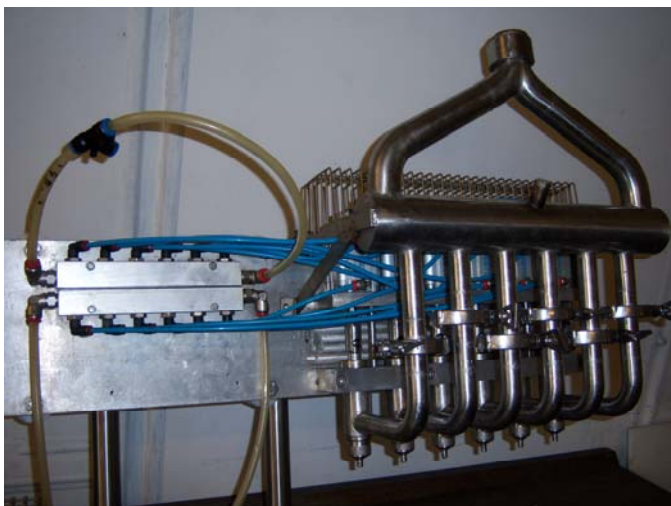


This equipment is fit to the dosing 2 taste or of half liquids products, with valves to double entry, opening and closing of the valve commanded by pneumatic pistons, with flute terminals for a wave dosing.

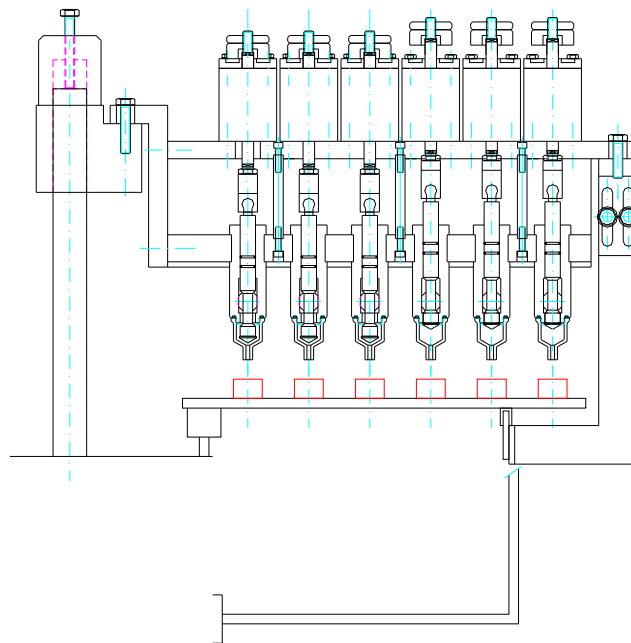
entirely registrabile in its position adapts him with any anchorage to all the cars.  
It has a speed of tested production of 20 shots/1s'



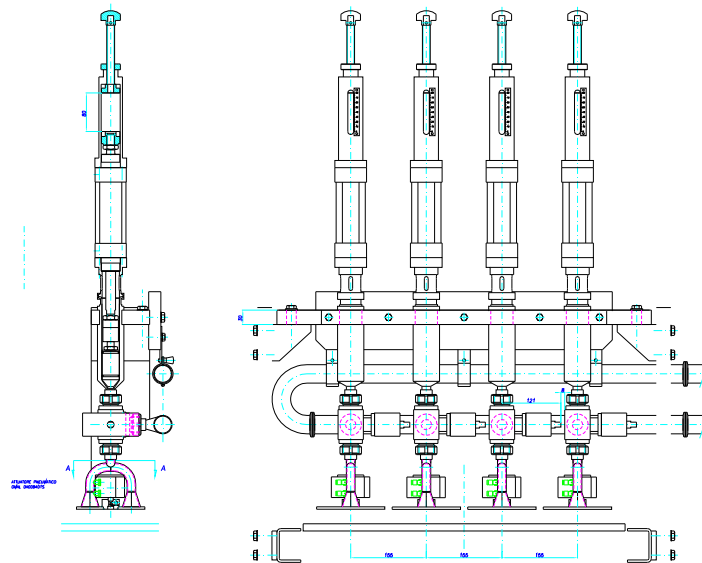
**FILLING GROUP WITH VALVES**



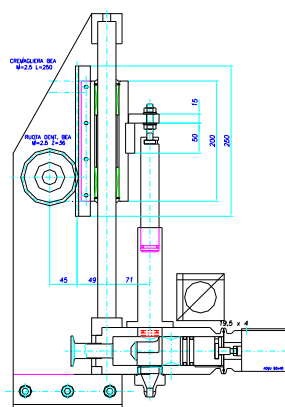
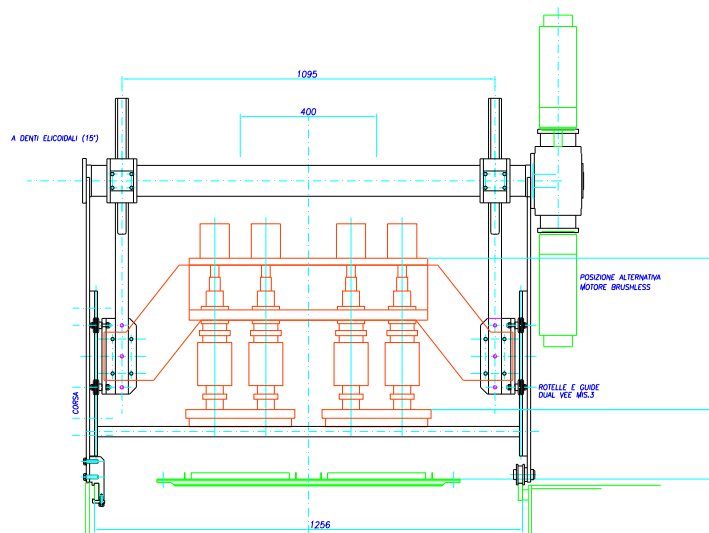




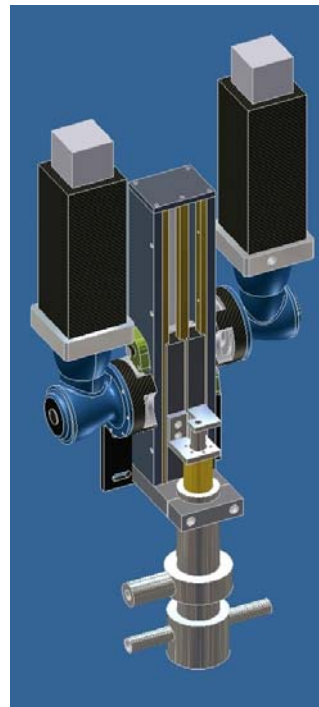
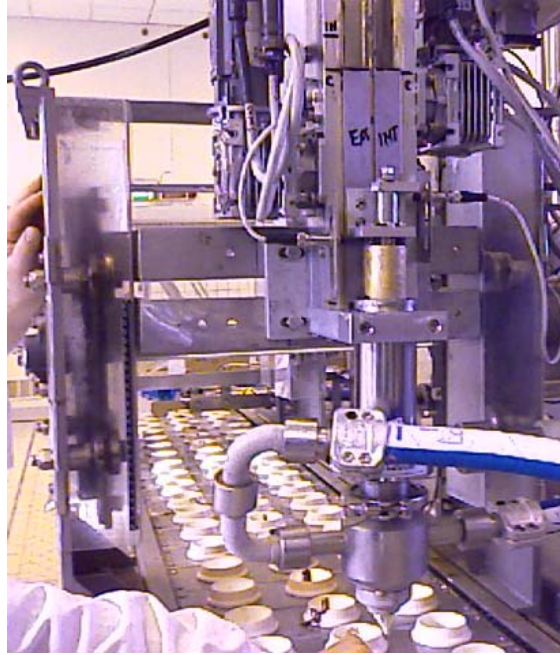
**VOLUMETRIC DOSING GROUP WITH PNEUMATIC VALVES**



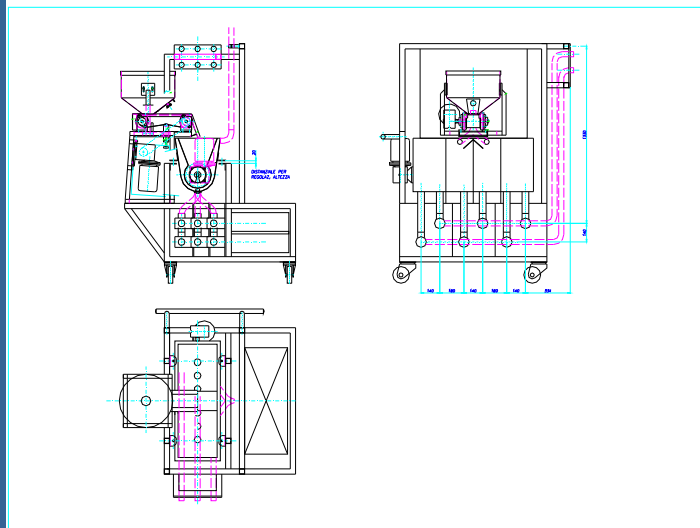
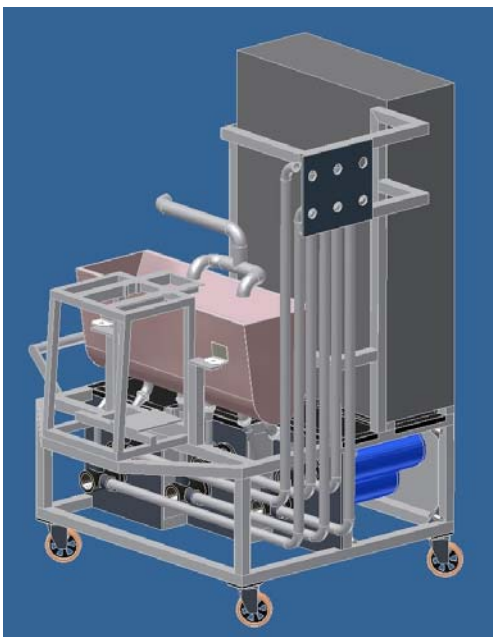
**MOTION SYSTEM FOR DOSING GROUPS WITH CONTROLLED AXES**



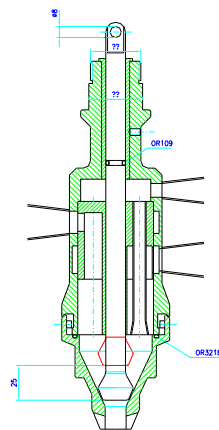
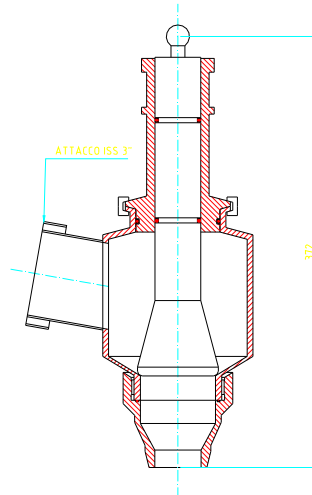
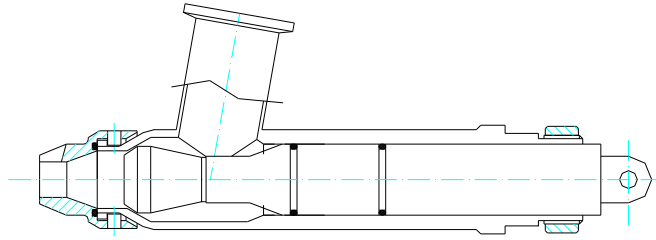
**TWO-TASTE VALVE AT DOUBLE STEM AND BRUSHLESS MOTOR**

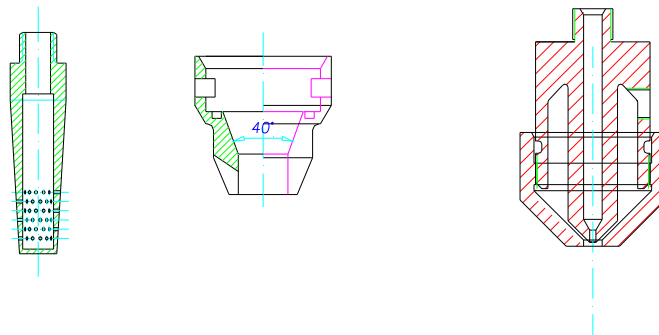
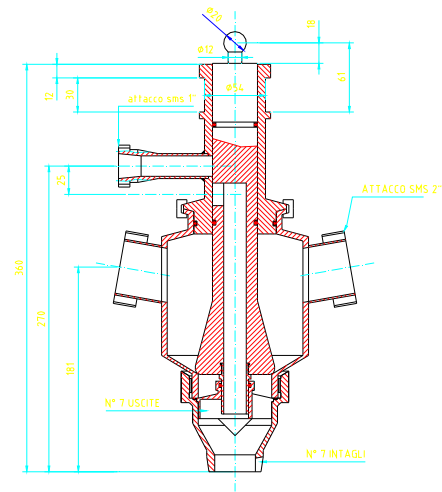


## **DOSING GROUP WITH JOHNSON PUMPS**



**VALVES:1 TASTE - 2 TASTE – 3 TASTE & TERMINALS**





## OTHERS DOSING GROUPS

